

Anti-VAV1 Antibody
Rabbit polyclonal antibody to VAV1
Catalog # AP61286**Specification**

Anti-VAV1 Antibody - Product Information

Application	WB, IHC
Primary Accession	P15498
Other Accession	P27870
Reactivity	Human, Mouse, Rat
Host	Rabbit
Clonality	Polyclonal
Calculated MW	98314

Anti-VAV1 Antibody - Additional Information**Gene ID** 7409**Other Names**

VAV; Proto-oncogene vav

Target/Specificity

KLH-conjugated synthetic peptide encompassing a sequence within the center region of human VAV1. The exact sequence is proprietary.

Dilution

WB~~WB (1/500 - 1/1000), IH (1/50 - 1/200)

IHC~~1:100~500

Format

Liquid in 0.42% Potassium phosphate, 0.87% Sodium chloride, pH 7.3, 30% glycerol, and 0.09% (W/V) sodium azide.

Storage

Store at -20 °C. Stable for 12 months from date of receipt

Anti-VAV1 Antibody - Protein Information**Name** VAV1**Synonyms** VAV**Function**

Couples tyrosine kinase signals with the activation of the Rho/Rac GTPases, thus leading to cell differentiation and/or proliferation.

Tissue Location

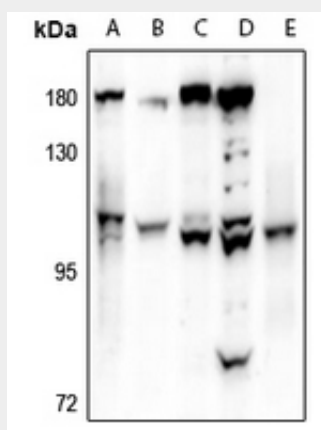
Widely expressed in hematopoietic cells but not in other cell types

Anti-VAV1 Antibody - Protocols

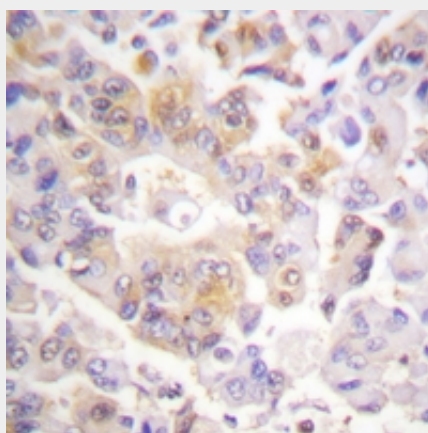
Provided below are standard protocols that you may find useful for product applications.

- [Western Blot](#)
- [Blocking Peptides](#)
- [Dot Blot](#)
- [Immunohistochemistry](#)
- [Immunofluorescence](#)
- [Immunoprecipitation](#)
- [Flow Cytometry](#)
- [Cell Culture](#)

Anti-VAV1 Antibody - Images



Western blot analysis of VAV1 expression in A375 (A), PMVEC (B), K562 (C), Myla2059 (D), mouse spleen (E) whole cell lysates.



Immunohistochemical analysis of VAV1 staining in human breast cancer formalin fixed paraffin embedded tissue section. The section was pre-treated using heat mediated antigen retrieval with sodium citrate buffer (pH 6.0). The section was then incubated with the antibody at room temperature and detected using an HRP conjugated compact polymer system. DAB was used as the chromogen. The section was then counterstained with haematoxylin and mounted with DPX.

Anti-VAV1 Antibody - Background

KLH-conjugated synthetic peptide encompassing a sequence within the center region of human

VAV1. The exact sequence is proprietary.